



Indicative CGI of The Alders Project

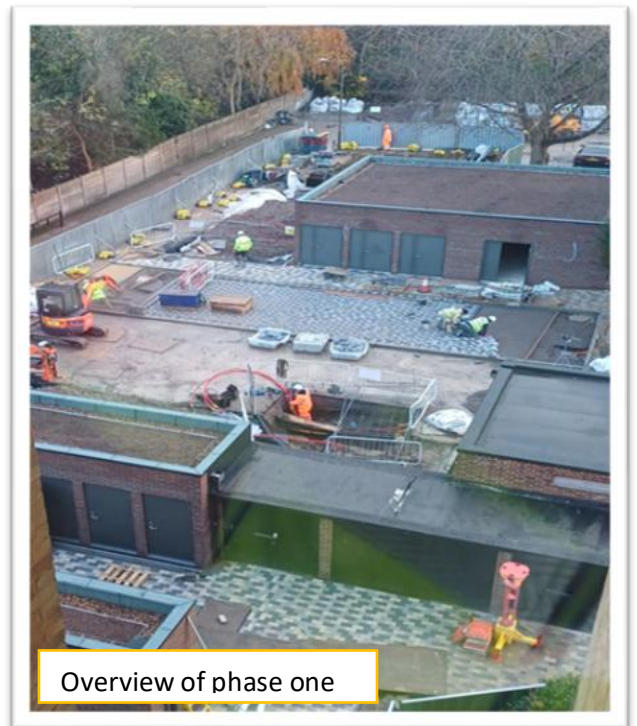
SITE UPDATE | December 2025

We are pleased to share our newsletter, providing an update on the progress of the 34 new residential units for social housing on behalf of Wandsworth Council on The Alders Estate, Aldrington Road SW16.

We would like to confirm that the out of hours trackside tree works were completed successfully and the next scheduled date is **Sunday 15th February 2026 between 08:00 and 18:00 hrs.**

Work is progressing well onsite, with the first phase of the works nearing completion in readiness for handover. The Outbuilding structures are complete with the internal fitouts currently being completed. The block paving and external hard landscaping work are still ongoing. (please see adjacent image)

The retaining wall works have commenced along the railway boundary in anticipation of the main works commencing in the New Year. Simultaneously, we have commenced excavating a trench along the access road to allow the water main to be installed, which will later service the new building.



Overview of phase one



Christmas Closure Notice and Security Information

As the festive season approaches, please note our holiday operating hours.

The site will be closed from 1:00 pm on Friday 19th December 2025 and will re-open on Monday 5th January 2026.

During this closure, please be assured that the site remains fully alarmed and monitored. In the event of an alarm being triggered, the appropriate contact person will be notified promptly for an immediate response.

Emergency Contacts During Shutdown:

Should you see anything suspicious on site please contact

- **Code 3 Security (Available 24/7):** 07487 859752 OR 07557 124604

Wishing you all a joyful Christmas and a Happy New Year!

If you have queries, please contact us at enquiries@bugler.co.uk.

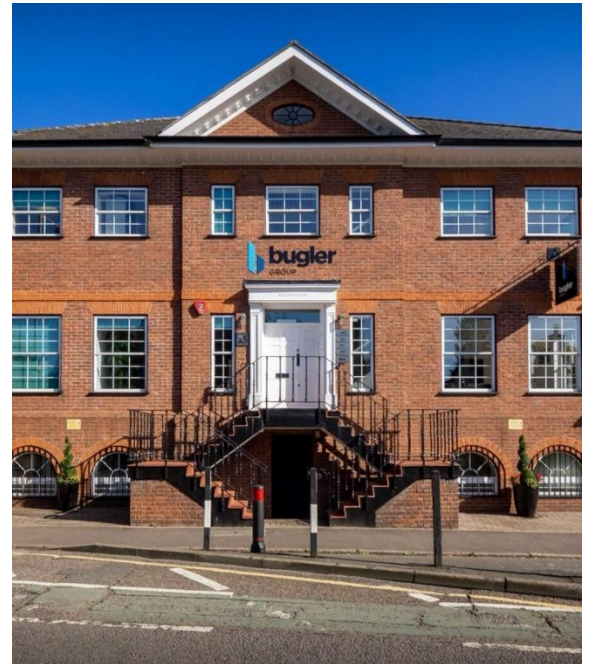
ABOUT BUGLER DEVELOPMENTS

Bugler Developments has been building high quality homes since 1982. We are a family-owned, award-winning contractor, working on behalf of local authorities and housing associations across London and the South East of England.

With our understanding and wealth of experience, we offer an integrated approach to the delivery of residential and mixed-use developments.

Giving back is also a key facet of what we do, and through the Bugler Foundation we have supported many worthwhile causes - from mental health to grassroots sport and local initiatives.

Social Value has always been important for us as a company we recognise that there is a duty to us as housebuilders to provide a positive legacy to the communities in which we work, both while we are on the site and after, and this is something our whole team contributes to.



WORKING HOURS

Our working hours are:
Monday to Friday – 8:00am to 6:00pm

OUT OF HOURS CONTACT DETAILS

Senior Site Manager - 📞 07512 318 573
Site security – Code 3 📞 0845 652 2269



Please recycle
this newsletter



Do you require an alternative version of this newsletter?
LARGE PRINT or translated?

Contact us at enquires@bugler.co.uk