

SITE UPDATE | September 2025

We are pleased to share with you our latest newsletter reporting on the construction of 92 flats at Beech Tree Place, Sutton.

We are excited to be making good progress and confirm the construction is continuing at the intended pace across the site. A summary of the progression, key points of progress and upcoming works are outlined below.



Indicative CGI of Beech Tree Place Project

Block A

Balcony parapet walls and roof canopy steelwork are complete. Electrical second fix is nearly done. Sanitaryware installation, wet room vinyls, and tiling are well advanced, Balcony paving and external mastic works are underway. Decoration has started on the third floor.

Block B

Eighth lift blockwork and seventh lift brickwork are finished. Screed and Under Floor Heating completed on floors one and two. Lift shaft works and waterproofing are progressing.

Block C

Façade block and brickwork to the sixth lift are done. Balcony supports installed. First floor windows and balcony doors are in. Screeding and Under Floor Heating progressing.

Block D

Roof works, including brown roof and stone borders, are progressing well. Lift 1 is installed; Lift 2 has started. Kitchens are ongoing. Decoration and plastering moving ahead.



Block A- Balcony Canopy

LOOKING AHEAD

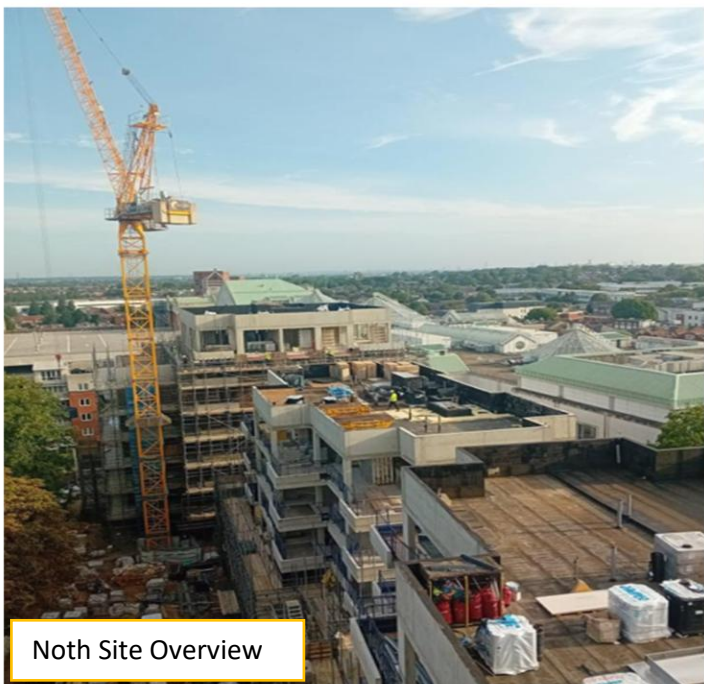
Next month, progress continues across all blocks. **Block A** will focus on flooring, carpentry, and completing internal decorations. In **Block B**, window installations will continue alongside ongoing internal works. **Block C** will see steady progress on façade works and further window installations. **Block D** will carry on with similar activities, with added focus on completing the show home for the shared ownership sales.

COMMUNITY UPDATE

As mentioned in our August newsletter, we have been working closely with St Nicholas Church to organise a special exhibition featuring the historic stone eagles from the previous development. We are pleased to announce that the eagles will be arriving at the church on **12th September**.

More details about the exhibition and the history of the eagles are included in the attached letter.

We continue to be very present with the community and helping support the local area.



Noth Site Overview

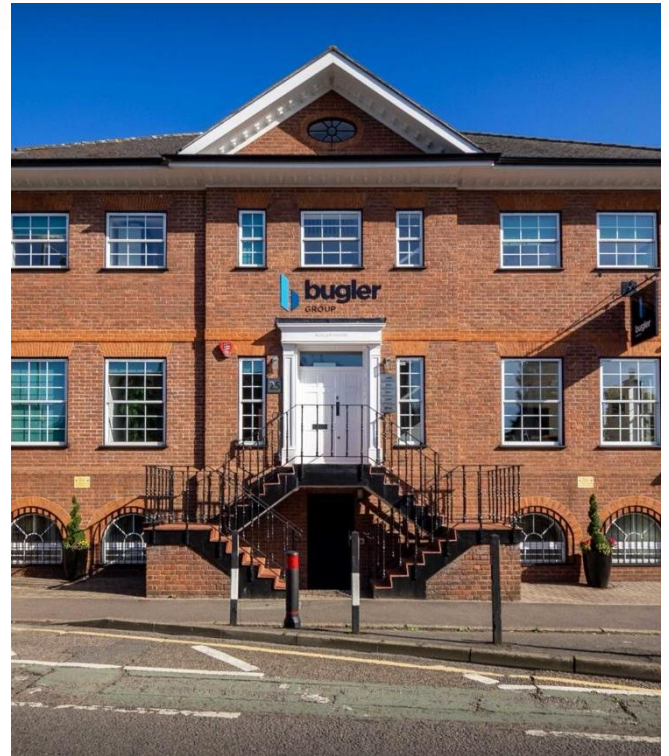
ABOUT BUGLER DEVELOPMENTS

Bugler Developments has been building high quality homes since 1982. We are a family-owned, award-winning contractor, working on behalf of local authorities and housing associations across London and the South East of England.

With our understanding and wealth of experience, we offer an integrated approach to the delivery of residential and mixed-use developments.

Giving back is also a key facet of what we do, and through the Bugler Foundation we have supported many worthwhile causes - from mental health to grassroots sport and local initiatives.

Social Value has always been important. We recognise that there is a duty to us as housebuilders to provide a positive legacy to the communities in which we work, both while we are on the site and after, and this is something our whole team buys into.



BEECH TREE PLACE PROJECT TEAM AND CONTACT DETAILS



CHARLOTTE PULLAN
Resident Liaison Officer
charlottepullan@bugler.co.uk
07729 097 913



MARK BOWRON
Senior Project Manager
markbowron@bugler.co.uk
07710 308 430



FELIX GROZA
Senior Site Manager
felixgroza@bugler.co.uk
07729 095 891



SCOTT WILLSON
Senior Contracts Manager



Please recycle this newsletter



Do you require an alternative version of this newsletter?
LARGE PRINT or translated?

Contact us at enquires@bugler.co.uk



STONES & STAINED GLASS

UNCOVERING ST NICHOLAS CHURCH'S STORY

A FREE EXHIBITION

ST NICHOLAS CHURCH, ST NICHOLAS WAY, SUTTON, SM1 1ST

Timings & Tours

Friday 12 September: 18:30 - 20:00

Saturday 13 September: 1000-1600

Thursday 18 September: 1200-1400

Saturday 20 September: 1000-1600

Sunday 21 September: 1200-1400

Discover the Beauty of
St Nicholas Church.

An Exhibition of Architecture,
Windows, and Traditions

www.churchyardfriends.com



FRIENDS OF
ST NICHOLAS
CHURCHYARD