



SITE UPDATE | November 2025

We are pleased to share with you our latest newsletter reporting on the construction of 92 flats at Beech Tree Place, Sutton.

We are excited to be making good progress and confirm the construction is continuing at the intended pace across the site. A summary of the progression, key points of progress and upcoming works are outlined below.

SUMMARY OF PROGRESS

It has been a busy and productive period across all blocks, with strong progress both inside and out.

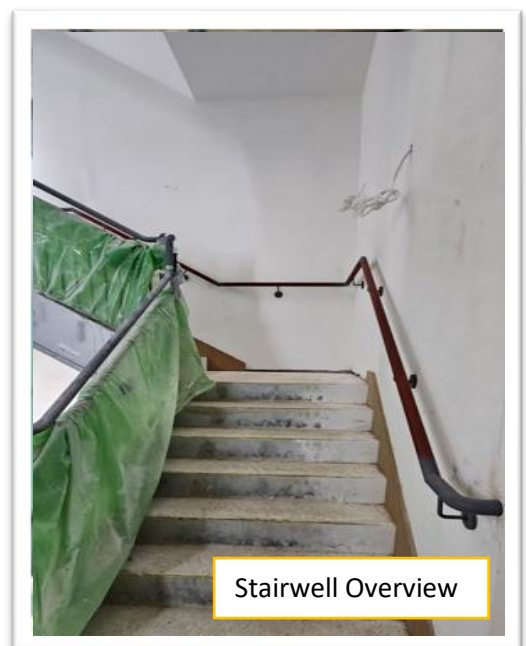
Block A - balcony railings and lighting have been completed, with finishing touches like painting, plastering, and brick cleaning well underway.

Block B - brickwork up to the top levels has moved forward, window installations, and interior work, including electrical and mechanical fittings.

Block C – this block has reached the upper levels of construction, with the main roof almost complete and window installations continuing.

Block D - the exterior brickwork is finished, and interior areas are being decorated, tiled, and fitted out.

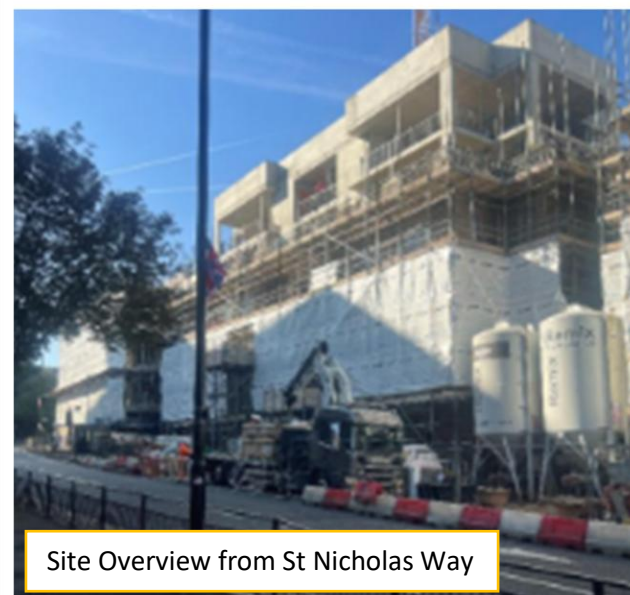
A key milestone this period was the energising of **Blocks B, C, and D**, marking an important step toward completion.



LOOKING AHEAD

Looking ahead, the focus will be on final touches and preparing spaces for completion. In **Block A**, teams will finish snagging, cleaning, and flooring, while **Block B** and **Block C** continue with façade works, window fittings, and internal finishes. **Block D** will see further progress on balconies, kitchens, and electrical installations, along with ongoing work in the plant room. With decoration, snagging, and final checks ramping up across all buildings, the project continues to move steadily towards its final stages.

If you have any queries, please contact us at enquires@bugler.co.uk



ABOUT BUGLER DEVELOPMENTS

Bugler Developments has been building high quality homes since 1982. We are a family-owned, award-winning contractor, working on behalf of local authorities and housing associations across London and the South East of England.

With our understanding and wealth of experience, we offer an integrated approach to the delivery of residential and mixed-use developments.

Giving back is also a key facet of what we do, and through the Bugler Foundation we have supported many worthwhile causes - from mental health to grassroots sport and local initiatives.

Social Value has always been important. We recognise that there is a duty to us as housebuilders to provide a positive legacy to the communities in which we work, both while we are on the site and after, and this is something our whole team buys into.



Please recycle this newsletter



Do you require an alternative version of this newsletter? **LARGE PRINT** or translated?

Contact us at enquires@bugler.co.uk