

SITE UPDATE | MARCH 2025

We are pleased to issue our March 2025 newsletter for Beech Tree Place, Sutton.

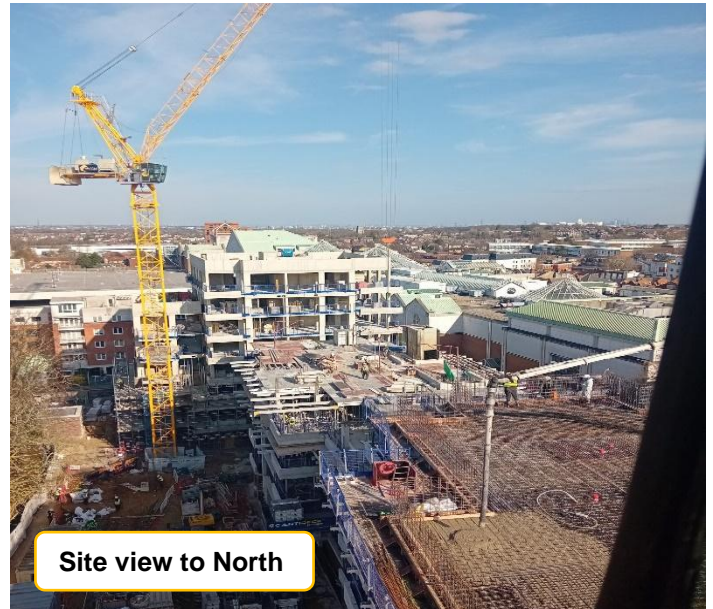
It is with great satisfaction that we can confirm that the construction of this project is continuing at the intended pace and that a summary of the progression, key points of progress and upcoming works are outlined as per the below.



Block A brickwork and blockwork are now progressing past level 3 to the roof level, with internal elements also moving forward and windows being installed. Block B roof concrete slab has been poured and brickwork has commenced on the ground floor. Block C level four concrete slab has been poured with level 5 nearing completion and brickwork also started on the ground floor. Lastly, block D brickwork is complete up to level 3 along with internal works commenced.

Earlier this month, we had the wonderful opportunity to assist with clearing the Dr. Rice Community Garden. We were joined by the SEND department from Sutton College and our clients from Sutton Borough Council, making it a truly collaborative and rewarding experience. Together, we worked to revitalise the garden, it was heartening to see everyone come together to support this valuable community space.

We thoroughly enjoyed the experience and look forward to continuing our efforts in the future, strengthening connections and making a lasting impact on the local community.



LOOKING AHEAD

Over the coming month we are scheduling block A brickwork to be complete up to roof level.

Block B concrete frame will be completed and brickwork progressed towards the first floor.

Block C roof slab will be completed and brickwork to progress.

Block D brickwork to progress to the fourth floor.

We thank you for your continued patience and support. Should you need to contact us, please refer to the details on the adjacent page.



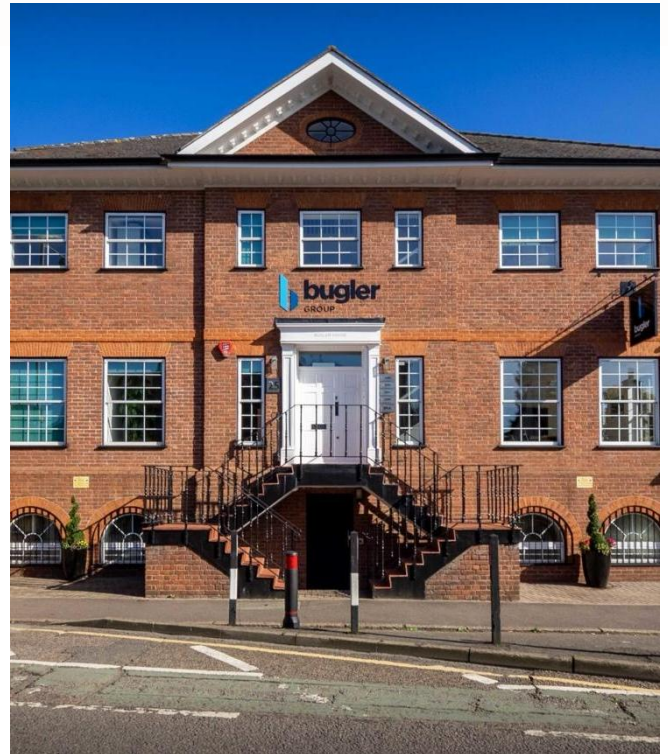
ABOUT BUGLER DEVELOPMENTS

Bugler Developments has been building high quality homes since 1982. We are a family-owned, award winning contractor, working on behalf of local authorities and housing associations across London and the South East of England.

With our understanding and wealth of experience, we offer an integrated approach to the delivery of residential and mixed-use developments.

Giving back is also a key facet of what we do, and through the Bugler Foundation we have supported many worthwhile causes - from mental health to grassroots sport and local initiatives.

Social Value has always been important. We recognise that there is a duty to us as housebuilders to provide a positive legacy to the communities in which we work, both while we are on the site and after, and this is something our whole team buys into.



BEECH TREE PLACE PROJECT TEAM AND CONTACT DETAILS



CHARLOTTE PULLAN
Resident Liaison Officer
charlottepullan@bugler.co.uk
07729 097 913



MARK BOWRON
Senior Project Manager
markbowron@bugler.co.uk
07710 308 430



CALVIN MOSS
Senior Site Manager
calvinmoss@bugler.co.uk
07921 758 221



SCOTT WILLSON
Senior Contracts Manager



Please recycle this newsletter



Do you require an alternative version of this newsletter?
LARGE PRINT or translated?

Contact us at enquires@bugler.co.uk