

SITE UPDATE | JULY 2025

We are pleased to share with you our latest newsletter reporting on the construction of 92 flats at Beech Tree Place, Sutton.

We are excited to be making good progress and confirm the construction is continuing at the intended pace across the site. A summary of the progression, key points of progress and upcoming works are outlined below.

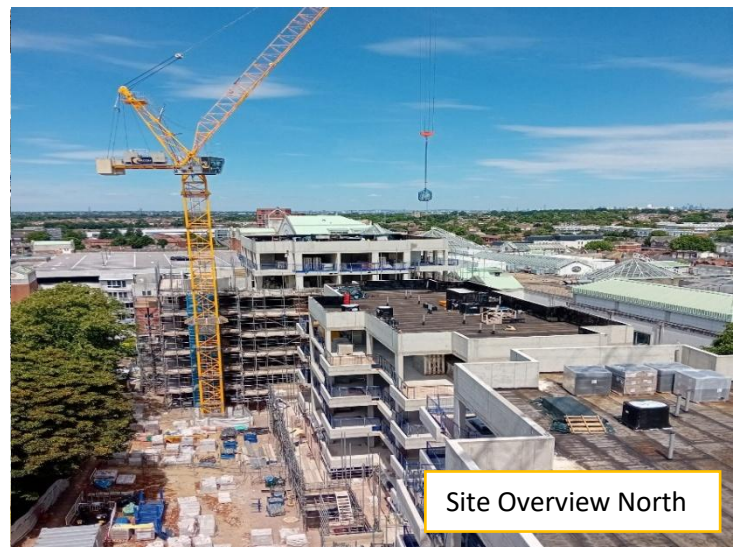
SUMMARY OF PROGRESS

Block A – Internal works are continuing within the apartments and the communal areas, along with works laying slabs to the balconies.

Block B – Externally, brickwork and blockwork is now nearing level 3 along with internal blockwork. Various internal works have continued this month and windows have been installed on the ground and first floors.

Block C – The masonry works to the external façade are now approaching level 2 and internal works have continued. Windows and doors have been installed to the ground floor.

Block D – Brickwork and blockwork externally and internally is now complete up to level 6. Internal studwork walls are now erected from ground to third floor and various internal works are progressing well.



LOOKING AHEAD

Over the coming month we will be continuing with masonry works to blocks A, B, C and D whilst also progressing with various internal elements to all blocks.

With all construction projects, there are times when a particular operation of work is dusty, noisy and disruptive, however we will do our best to keep this to a minimum.

This project has been registered with the Considerate Constructors Scheme. Should you have any concerns, please contact the team, details can be found at the end of this Newsletter.

COMMUNITY UPDATE

We recently welcomed Sutton District training students to site. During their time on site, they were given a tour and we spoke at length about careers and work experience opportunities. We have since had two work experience placements completed. The students thoroughly enjoyed their time and we look forward to welcoming more.



ABOUT BUGLER DEVELOPMENTS

Bugler Developments has been building high quality homes since 1982. We are a family-owned, award-winning contractor, working on behalf of local authorities and housing associations across London and the South East of England.

With our understanding and wealth of experience, we offer an integrated approach to the delivery of residential and mixed-use developments.

Giving back is also a key facet of what we do, and through the Bugler Foundation we have supported many worthwhile causes - from mental health to grassroots sport and local initiatives.

Social Value has always been important. We recognise that there is a duty to us as housebuilders to provide a positive legacy to the communities in which we work, both while we are on the site and after, and this is something our whole team buys into.



BEECH TREE PLACE PROJECT TEAM AND CONTACT DETAILS



CHARLOTTE PULLAN
Resident Liaison Officer
charlottepullan@bugler.co.uk
07729 097 913



MARK BOWRON
Senior Project Manager
markbowron@bugler.co.uk
07710 308 430



CALVIN MOSS
Senior Site Manager
calvinmoss@bugler.co.uk
07921 758 221



SCOTT WILLSON
Senior Contracts Manager



Please recycle this newsletter



Do you require an alternative version of this newsletter?
LARGE PRINT or translated?

Contact us at enquires@bugler.co.uk