

SITE UPDATE | JANUARY 2025

We are pleased to issue our January newsletter for Beech Tree Place, Sutton.

It is with great satisfaction that we can confirm that the construction of this project is continuing at the intended pace and that a summary of the progression, key points of progress and upcoming works are outlined as per the below.

Block A brickwork and blockwork is complete up to the first floor and halfway to level two. Internally, mechanical and electrical containment works have commenced.

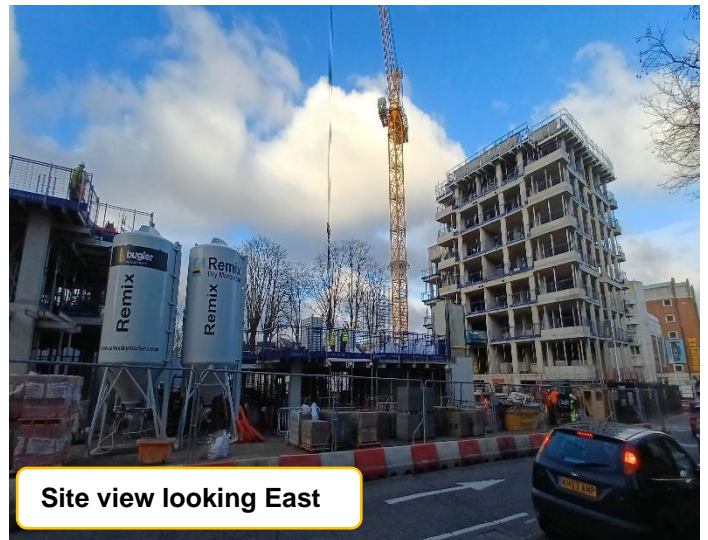
Block B level two concrete slab is complete and we are preparing for level three.

Block C foundations are complete and steelwork for the first floor is currently being installed.

Block D concrete frame is fully complete up to and including the roof, with brickwork and blockwork progressing from level one to level two. Internally, mechanical and electrical containment works are in progress and the electrical substation roof is complete.



Indicative CGI of Beech Tree Place project



Site view looking East



Block B second floor slab

LOOKING AHEAD

Over the coming month we are scheduling blocks A and D second floor block and brickwork to finish, with the Scaffolders progressing works and block A roofing works commencing. We also intend to further progress mechanical works internally in block D. Block B third floor slab will be complete this month and the structure will be progressing to level four with block C being constructed to the second floor.

As in all construction projects, there are times when a particular operation of work is dusty, noisy and disruptive, we will use our best endeavours to keep this to minimum. This project has been registered with the Considerate Constructors Scheme. Should you have any concerns please contact the team on the adjacent page.

ABOUT BUGLER DEVELOPMENTS

Bugler Developments has been building high quality homes since 1982. We are a family-owned, award winning contractor, working on behalf of local authorities and housing associations across London and the South East of England.

With our understanding and wealth of experience, we offer an integrated approach to the delivery of residential and mixed-use developments.

Giving back is also a key facet of what we do, and through the Bugler Foundation we have supported many worthwhile causes - from mental health to grassroots sport and local initiatives.

Social Value has always been important. We recognise that there is a duty to us as housebuilders to provide a positive legacy to the communities in which we work, both while we are on the site and after, and this is something our whole team buys into.



BEECH TREE PLACE PROJECT TEAM AND CONTACT DETAILS



CHARLOTTE PULLAN
Resident Liaison Officer
charlottepullan@bugler.co.uk
07729 097 913



CALVIN MOSS
Senior Site Manager
calvinmoss@bugler.co.uk
07921 758 221



SCOTT WILLSON
Senior Contracts Manager



BEN EPHGRAVE
Construction Director



Please recycle this newsletter



Do you require an alternative version of this newsletter?
LARGE PRINT or translated?

Contact us at enquires@bugler.co.uk