



SITE UPDATE | February 2026

We are pleased to share with you our latest newsletter reporting on the progress of 92 flats at Beech Tree Place, Sutton.

We are excited to be making good progress and confirm the construction is continuing at the intended pace across the site. A summary of the progression, key points of progress and upcoming works are outlined below.

The London Borough of Sutton Highways Team are starting road and footpath works on St Nicholas Way in front of the site on 2nd March 2026. This will mean that St Nicholas Way will be reduced to one lane at this point and entry into West Street will be closed. This is due to be for a period of 10 weeks.

SUMMARY OF PROGRESS

Good progress continues to be made across all buildings on site.

Block A - Key plant equipment was lifted into place on the roof with internal communal works progressing well. Hard and soft landscaping around Block A has started with the construction of the boundary wall nearing completion.

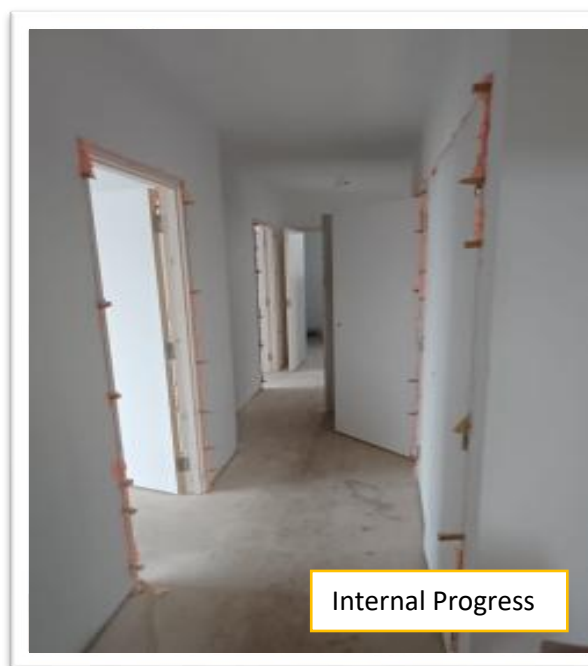
In Blocks B and C, flats have been plastered and decorations started. Kitchen and bathroom installations continue. External building work is completing with solar panels being installed on the roofs. This will allow the scaffolding to start coming down. Block D is well advanced with decorations, flooring and appliance installations progressing.



LOOKING AHEAD

Next period, the focus will be on testing services, finishing touches, and getting areas ready for handover. In **Block A**, electrical and water systems will be fully tested, roof works completed, and landscaping continued. **Blocks B and C** will move further into decorating, flooring, balcony metalwork, and completing remaining apartment details. In **Block D**, final flooring, mechanical and electrical works, and communal area finishes will continue, along with detailed snagging to ensure quality. and surveys will take place ahead of installing window blinds.

If you have any queries, please contact us at enquires@bugler.co.uk.



ABOUT BUGLER DEVELOPMENTS

Bugler Developments has been building high quality homes since 1982. We are a family-owned, award-winning contractor, working on behalf of local authorities and housing associations across London and the South East of England.

With our understanding and wealth of experience, we offer an integrated approach to the delivery of residential and mixed-use developments.

Giving back is also a key facet of what we do, and through the Bugler Foundation we have supported many worthwhile causes - from mental health to grassroots sport and local initiatives.

Social Value has always been important. We recognise that there is a duty to us as housebuilders to provide a positive legacy to the communities in which we work, both while we are on the site and after, and this is something our whole team buys into.



WORKING HOURS

Our working hours are:
Monday to Friday – 8:00am to 6:00pm

OUT OF HOURS CONTACT DETAILS

Senior Project Manager - ☎ 07710 308 430
Site security – Code 3 ☎ 0845 652 2269



Please recycle
this newsletter



Do you require an alternative version of this newsletter?
LARGE PRINT or translated?

Contact us at enquiries@bugler.co.uk