

SITE UPDATE | August 2025

We are pleased to share with you our latest newsletter reporting on the construction of 92 flats at Beech Tree Place, Sutton.

We are excited to be making good progress and confirm the construction is continuing at the intended pace across the site. A summary of the progression, key points of progress and upcoming works are outlined below.

SUMMARY OF PROGRESS

Block A

Progress continues steadily across both apartment and communal areas. Externally, the main roof works are advancing well, while the balcony paving slabs have now been completed, marking another key milestone in the overall build.

Block B

Internally, floor screed preparation works are currently underway. Externally, the masonry work on the building envelope has progressed to the third floor. In addition, window installations have been completed up to the second floor, contributing to the building's enclosure.

Block C

The masonry works to the external façade at Level 2 are now complete. Windows and doors have been successfully installed on the second floor, supporting further internal progress.

Block D

Significant progress has been made at Block D, with masonry works to the external façade reaching completion at Level 6. Internally, works are advancing well up to the fourth floor, while windows have been installed on the fifth floor.

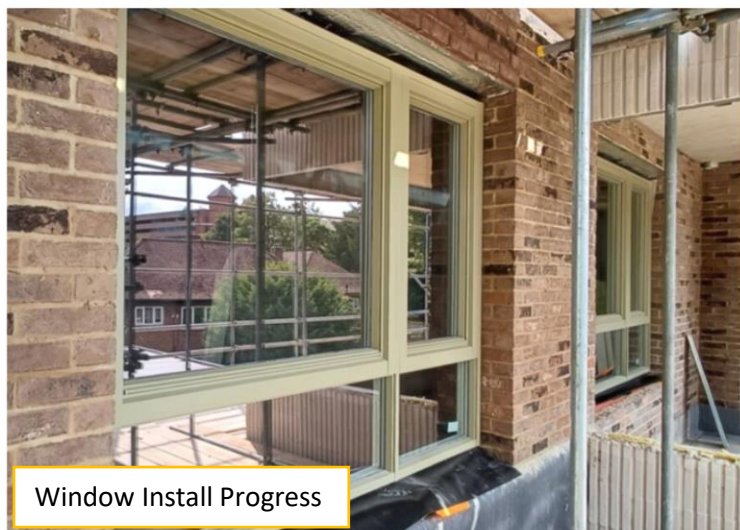


LOOKING AHEAD

In the coming weeks, construction efforts will focus on several key areas across the development. Masonry works will continue on Blocks B, C, and D, supporting the progression of the external envelopes. Window installations are scheduled to continue on Block C, further enclosing the structure. Internally, plastering works will advance on the fourth and fifth floors of Block D. Meanwhile, on Block A, the main roof works will push towards completion alongside the installation of architectural metalwork, marking important visual and structural milestones.

COMMUNITY UPDATE

We are excited to soon be welcoming back the historic stone eagles, which were originally part of the existing building. While their exact age remains unknown, they are believed to be the oldest known artefacts associated with Sutton. Once returned, the eagles will be proudly displayed at St Nicolas Church, allowing the public to appreciate their historical significance. We will keep you updated on the exact date of their return and installation.



ABOUT BUGLER DEVELOPMENTS

Bugler Developments has been building high quality homes since 1982. We are a family-owned, award-winning contractor, working on behalf of local authorities and housing associations across London and the South East of England.

With our understanding and wealth of experience, we offer an integrated approach to the delivery of residential and mixed-use developments.

Giving back is also a key facet of what we do, and through the Bugler Foundation we have supported many worthwhile causes - from mental health to grassroots sport and local initiatives.

Social Value has always been important. We recognise that there is a duty to us as housebuilders to provide a positive legacy to the communities in which we work, both while we are on the site and after, and this is something our whole team buys into.



BEECH TREE PLACE PROJECT TEAM AND CONTACT DETAILS



CHARLOTTE PULLAN
Resident Liaison Officer
charlottepullan@bugler.co.uk
07729 097 913



MARK BOWRON
Senior Project Manager
markbowron@bugler.co.uk
07710 308 430



FELIX GROZA
Senior Site Manager
felixgroza@bugler.co.uk
07729 095 891



SCOTT WILLSON
Senior Contracts Manager



Please recycle this newsletter



Do you require an alternative version of this newsletter?
LARGE PRINT or translated?

Contact us at enquires@bugler.co.uk