



SITE UPDATE | May 2026

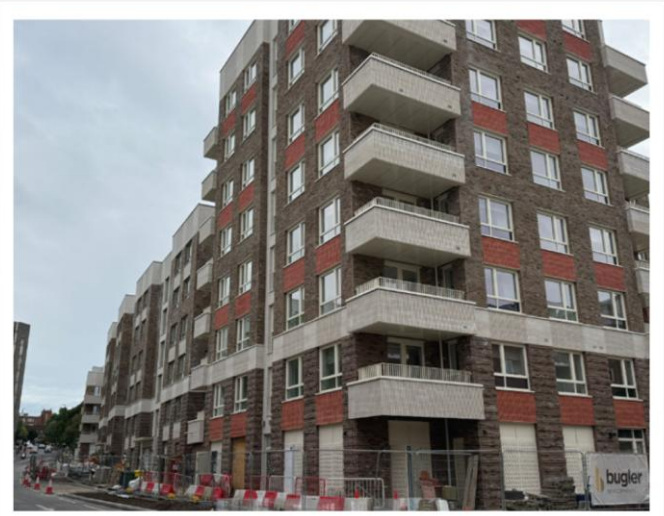
We are pleased to share with you our latest newsletter reporting on the progress of 92 flats at Beech Tree Place, Sutton.

We are excited to be making good progress and confirm the construction is continuing at the intended pace across the site. A summary of the progression, key points of progress and upcoming works are outlined below.

SUMMARY OF PROGRESS

Works across all blocks continued to progress towards handover, with a strong focus on final finishes and communal area completion. Key achievements included completion of major mechanical, electrical and plant commissioning activities and apartment decorations. The Landscaping and external works have also advanced significantly. Viewings by potential residents have started as we aim for occupation of the properties over the coming months.

This month Bugler development attended Sutton District College to deliver workshops across two of their campuses. The sessions included a programme of work tasks designed to provide a better insight into the order of works on a live site. The second workshop was an insight into the customer care department.



LOOKING AHEAD

The upcoming period will focus on final handover preparation activities across the development. Planned works include completion of communal finishes, remaining flooring and decorations, final balcony and metalwork installations, landscaping, commissioning and testing activities. Efforts will also continue towards completing external works and finalising all communal systems ahead of handover.

If you have any queries, please contact us at enquiries@bugler.co.uk.

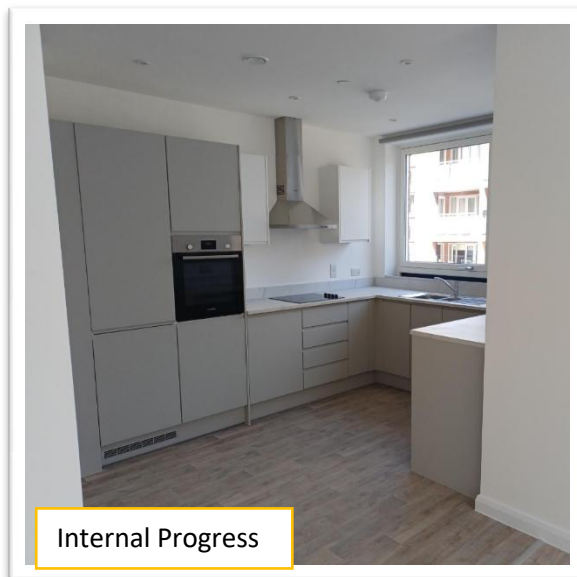
ABOUT BUGLER DEVELOPMENTS

Bugler Developments has been building high quality homes since 1982. We are a family-owned, award-winning contractor, working on behalf of local authorities and housing associations across London and the South East of England.

With our understanding and wealth of experience, we offer an integrated approach to the delivery of residential and mixed-use developments.

Giving back is also a key facet of what we do, and through the Bugler Foundation we have supported many worthwhile causes - from mental health to grassroots sport and local initiatives.

Social Value has always been important. We recognise that there is a duty to us as housebuilders to provide a positive legacy to the communities in which we work, both while we are on the site and after, and this is something our whole team buys into.



WORKING HOURS

Our working hours are:
Monday to Friday – 8:00am to 6:00pm

OUT OF HOURS CONTACT DETAILS

Senior Project Manager - ☎ 07710 308 430
Site security – Code 3 ☎ 0845 652 2269



Please recycle
this newsletter



Do you require an alternative version of this newsletter?
LARGE PRINT or translated?

Contact us at enquiries@bugler.co.uk